

# Movement that inspires

At Kia, we believe that movement inspires ideas. Great ideas come to you when you're on the move. Whether you're walking, traveling on a train or driving. It's why we create the spaces and the time you need to bring ideas to life. Very like the experience that awaits you behind the wheel of every Kia. With our design, space innovation, purpose driven technology and built-in sustainability, we aim to inspire every time you encounter the Kia brand. Because you never know where your next big idea awaits. But they are out there, waiting to be discovered. So, what are you waiting for? Get moving. Get inspired.

## About Kia Corporation

Kia Corporation ([www.kia.com](http://www.kia.com)) - a maker of quality vehicles for the young-at-heart - was founded in 1944 and is Korea's oldest manufacturer of motor vehicles. It produces over 3 million vehicles annually through 10 manufacturing and assembly operations located in 5 countries. These are then sold and serviced through a network of distributors and dealers spanning around 180 countries. Kia currently employs around 50,000 people worldwide and has annual revenues exceeding US\$44 billion. It is the major sponsor of the Australian Open and serves FIFA, the governing body of the FIFA World Cup - as official automotive partner. Kia Corporation's brand slogan - "Movement that inspires" - represents the company's global commitment to surprise the world by providing exciting and inspiring experiences that go beyond expectations.

 /KiaMotorsPakistan

 /KiaMotorsPk

 /kiamotorsPakistan

 /KiaMotorsPakistan



**LUCKY MOTOR CORPORATION LIMITED**  
Bin Qasim Industrial Park, (SEZ) DEH PIPRI SURVEY # 78-79  
107 & NC97/98 Pakistan Street, Bin Qasim Town, Korangi Landhi Town, Next to Arabian Sea Country Club.  
Phone # 111-11-LMCL (111-11-5625)

[kia-luckymotorcorp.com/](http://kia-luckymotorcorp.com/)

 **australian open**

 **MAJOR PARTNER**

 **UEFA EUROPA LEAGUE**

 **Official Partner**

 **Here to help!**





SUV for the CITY





## Play it young

Our childhood is the most magical time of our lives. When we were little, everything seemed possible. From flying in the air to traveling to the sun, our imagination knew no boundaries. We were curious and ambitious and the path towards discovery was clear as day. But along the passage of growing up, we kept shedding our imagination on the way, navigating the labyrinth of life with practicality and logic. By the time we reached our adulthood, the child in us disappeared behind the curtains of reality, and with it, our imagination lost its way. For all those wanderers wishing to reclaim their inner child, Kia opens up a magical doorway for you. With Kia Stonic, you are driven back into the world of imagination and curiosity that once colored your childhood. Discover new places and experiences that inspire you, stay inquisitive and give creativity some room to flourish, while being true to your inner self.

# Grasp every moment

Created for drivers who grasp every moment, push every boundary and relish every adventure, the Kia Stonic brings fresh excitement and a free spirit to the crossover experience. With its sleek muscular body, sporty compact styling, exceptional handling and outstanding performance - the new Kia Stonic is for those who always demand more from life.





## Escape the everyday

From the first glance, the new Kia Stonic sets its own rules, with looks that challenge convention. Its dynamic sporty appearance at the front is thanks to the 3-dimensional shape of the grille, vertical fog lamp housings and integrated headlamps with signature LEDs Daytime Running Lights. Add to that a choice of vibrant body colors, and you have a style that simply says, 'my life... my way'.

## Stand out from the crowd

From behind, the agile Kia Stonic makes a striking and lasting impression. The dramatically raked, spoiler capped backlight window and bold wheel arches give it a muscular view, whilst three-dimensional graphics inside the rear combination lamps make it truly striking. What's more, its sleek, sculpted tailgate and airflow regulating silver skid plate, together give it that strong but rugged urban feel which is guaranteed to turn heads.



# So they stop and stare

A striking design with stunning modern horizontal LED DRLs, iconic shape, and vibrant color options. Featuring a capability that exudes exhilaration and puts your positive vibes on full display, drive through a rainy night with absolute visibility and accuracy.



**LED Daytime Running Lamps** - Make your presence known during the day with the DRL of New stonic with its cutting edge design that is sure to make your head turn.



**LED Head Lamps** - Stylish LED headlights with DRLs offer enhanced illumination, enabling you to better view the road ahead.



**Rear Lamps** - LED rear combination lamps illuminate instantly and give the rear a modern, high-tech appearance.



**Fog Lamps** - The front fog lamps allow for increased visibility in low visibility environments.





## Be true to your own identity

Living in the moment means no boundaries, and that's exactly what you can expect inside the new Kia Stonic. Sculpted contours immediately please the eye and the senses, making driving fresh and fun. The D-cut steering wheel is shaped to stay clear of your legs, whilst the other controls are designed and positioned to place you and your demands in perfect unison.

# Seize every second

When you're in control, information is essential, and the new Kia Stonic puts it right where you need it, while eliminating any distractions. Bluetooth technology offers hands-free access to your phone using voice recognition, whilst the state-of-the-art information system with its floating color touch screen keeps you fully informed and entertained.



## 4.2-Inch Supervision Cluster

A tasteful, customizable and intelligently designed supervision cluster displays outside temperature as well as vehicle and trip data, and lets you adjust the settings of your Stonic.



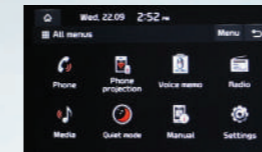
## Front USB Port

A USB port lets you charge mobile phones and other compatible devices.



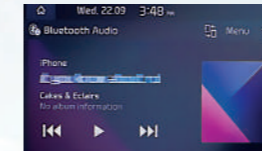
## Rear USB Port

A USB port at the rear of the center console lets rear-seat occupants charge their devices too.



## androidauto

Android Auto™ is designed to keep you perfectly connected to your phone – while minimizing distractions so you stay safe on the road. The simple, intuitive interface lets you access features like Google Maps, apps, music and voice control, and automatically organizes info into simple cards that appear just when they're needed.



## Works with Apple CarPlay

Apple CarPlay™ is a smart, safe way to use your iPhone while driving. It takes all the things you might want to do, and puts them into your Stonic's display, so you can get directions, make a call and listen to music – all while staying focused on the road.



## 8-Inch Floating Touch Screen Infotainment

Elevate your experience with a vivid 8" floating LCD touch screen with Bluetooth connectivity, so that your favorite tunes and content are always within reach.

# Relish every detail

Whether your style is urban or outdoorsy, let your personality shine through with a Stonic interior treatment and make your own personal statement. You can choose from a variety of tasteful and durable color and fabric treatments that shout (or whisper) the real you.



## Sunroof

Enjoy the pleasure of open air driving and sense of roominess inside the cabin with a touch of a button.

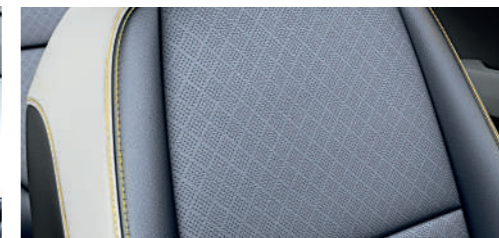
## Black One-Tone Interior



### Premium Fabric

The interior is upholstered in a combination of soft tricot and woven cloth with a muted dark grey pattern. The coordinated door and dash trim provides a consistently fresh and relaxing environment.

## Two-Tone Grey Interior



### Two-Tone Grey Artificial Leather with Yellow Package

The grey artificial leather and cloth trim is embossed in a subtle diagonal plaid arrangement of micro-perforations for breathability. Featuring colored embossing with yellow stitching that matches the tone of the bright yellow dash, gives the interior a sense of individuality.



## Dynamic in every way

When you're just as happy zipping around the city streets as you are exploring what's over the next horizon, the Kia Stonic's petrol engines offer dynamic performance with lower emissions, making every drive a joy and a pleasure.

**1.4**  
MPI engine with  
**100 PS**  
maximum output

### Engine Specification

Dynamic and reliable 1.4L MPI petrol engine provides frugality and agility for an excellent all-round performance.



### 6 Speed Automatic Transmission

Stay firmly in control, thanks to the 6-Speed automatic transmission that seamlessly transitions the power, making it an effortless drive.

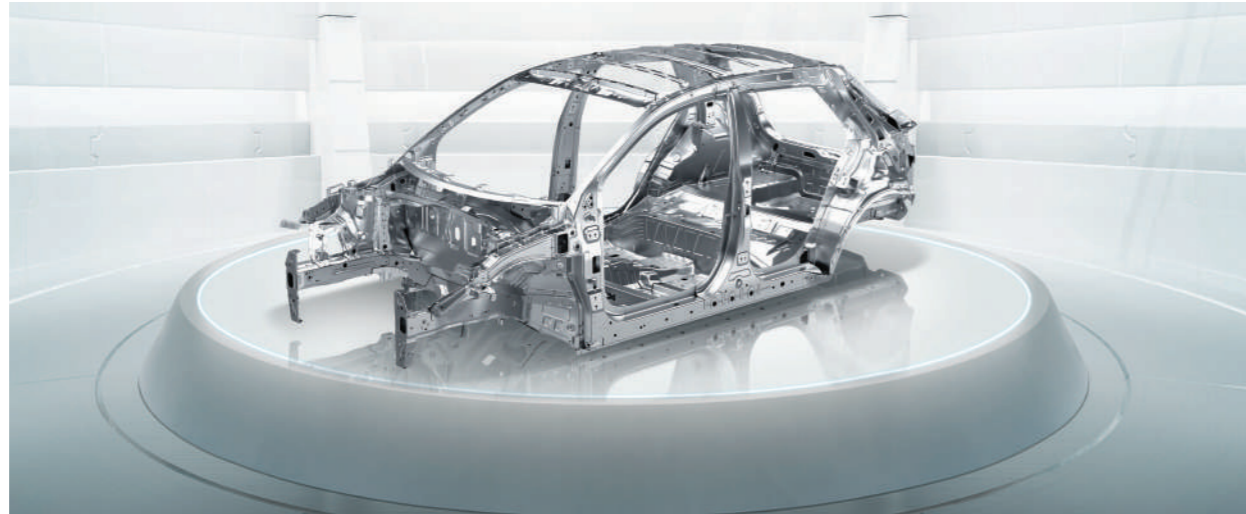


### Cruise Control with Manual Speed Limit Assist

Set and maintain a constant speed and simply step on the brake or accelerator when you want to disengage.

# Protect what you love

Wherever you are, whatever you're doing, you can be sure that the Kia Stonic is protecting you and the people around you. That's because it's engineered to help drivers stay out of trouble and to manage collision forces in ways that minimize damage.



## AHSS for Strength and Protection/Greater Strength and Added Protection

The Stonic comes equipped with Advanced High Strength Steel (AHSS) which makes the body phenomenally rigid, enhancing cabin protection as well as dynamic performance.

## 98 Metres of Structural Adhesive/Reduced Noise

Greater use of structural adhesive means the new Kia Stonic is both rigid and light, and offers outstanding noise and vibration management.

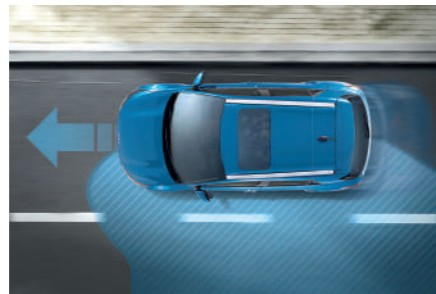
## 8 Hot-Stamping Zones/Extra Strength

The Stonic features hot-stamping of components in eight core stress areas meaning the strengthened body structure helps provide improved crash protection.



## Hill-start Assist Control (HAC)

When you're on a steep upward incline, pulling away from a standing start can be a concern, but don't worry, HAC is designed to stop you from rolling backwards.



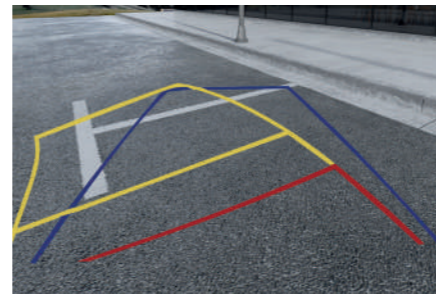
## Vehicle Stability Management (VSM)

Working in concert with the motor driven power steering, Kia's VSM helps ensure that the Stonic remains stable when simultaneously braking and cornering.



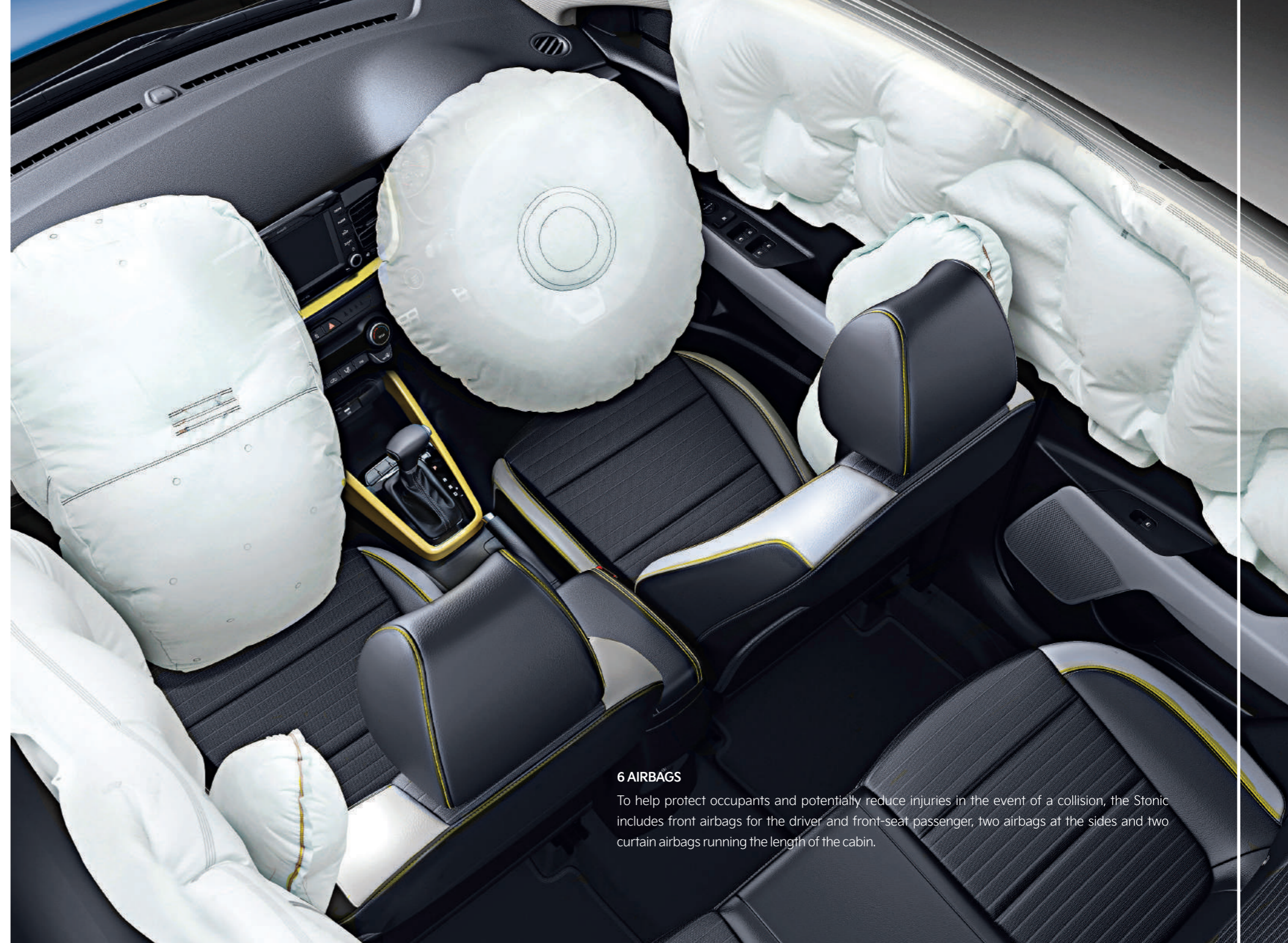
## Reverse Parking Distance Warning (PDW) with Switch On/Switch Off Button

Ideal for confident parking, PDW uses ultrasonic sensors mounted on the bumpers to warn of any obstacles in front or behind when maneuvering into a parking space. The audible beeps can be switched on or off.



## Rear View Monitor

Use the large, center screen to help you see what's behind your vehicle, and includes guidelines that adjust to follow the direction you're turning.



## 6 AIRBAGS

To help protect occupants and potentially reduce injuries in the event of a collision, the Stonic includes front airbags for the driver and front-seat passenger, two airbags at the sides and two curtain airbags running the length of the cabin.



## Share the experience

Special moments in life are more fun when you share them with friends and family. That's why the new Kia Stonic's roomy interior can accommodate up to five people with ample space for stretching and relaxing. And when you're on the move or simply chilling out, the up-to-date entertainment system, automatic transmission and air conditioning make the whole experience even more inviting.

# Open to any possibility

When routine is the last word on your mind, the Kia Stonic is designed to put your plans and dreams in motion. With folding split seats, spacious interior and flexible luggage capacity of up to 1,155 liters, it's easier than ever to set out and explore or simply tackle whatever the day brings.



## Adjustable Cargo Floor

Position the cargo area floor higher to be flush with the folded seat backs or lower to accommodate tall items.



## Folding Rear Seats

Rear seats fold nearly flat, so you can fit long or bulky items in the extended cargo space.

## 60:40 Split-folding Rear Seats

The rear seat backs split 60:40 and fold flat separately, offering you useful choices for managing cargo and passenger space.



# Expect more

True style is knowing your own mind and expressing your own personality. In addition to its modern design, state-of-the-art technology and cleverly conceived features, the new Kia Stonic also comes with a wide selection of features that make it perfect for urban travel. Here are a few!



**Smart Entry with Push Start:** When you have the Smart key with you, start the ignition with a mere push of a button.



**Auto Climate Control:** Auto temperature control lets you select a desired temperature for the system to maintain. A digital readout displays temperature and settings.



**Height Adjuster (Driver):** Find varying levels of comfort by adjusting your seat height according to your liking and desired leg room.



**ISO Child Anchor:** Keep your child safely and securely seated by strapping their seat to the special metal anchors in the vehicle.



**Power Windows:** Power window controls for the rear doors give rear-seat passengers control over how much or little air to let in.



**Metal Pedals:** Add an authentically sporty look and feel to the interior with stainless finished metal pedal pads.



**Sun Visor Illumination Lamps:** Tasteful LEDs beside the vanity mirror on the driver-side sun visor light up to help with last minute touch-ups.



**Cup Holder:** 6 cup holders help you easily store your coffee or bottle on the go with out spilling.



**Overhead Console Lamp with Sunglass Case:** An overhead console helps you stay organized and keeps your sunglasses high and dry, where you can find them while keeping your eyes ahead.



**Center Console Armrest:** The comfortable armrest is coordinated with interior trim and integrated with a console that includes two cup holders and a sliding compartment.



**Electro-Chromic Mirror:** The electrochromic mirror automatically dims the most intense light sources in the mirror, retaining a clear view of other objects.



**Tire Pressure Monitoring System (TPMS):** Tire Pressure Monitoring System (TPMS) in your Stonic is designed to alert you of a change in tire pressure that could put you at risk.



**Auto Defogger:** A sophisticated sensor detects fogging on the front windshield and clears it automatically, giving you driving clarity at all times.



**Auto Light Control:** The headlamps are engineered to respond smartly to external light and adjust to its levels for better driving facilitation in the night time.



**Electric Folding Mirrors with Side Repeaters:** The outside mirrors can be folded and unfolded conveniently with the push of a button. Repeater lights make your intentions clear.



**High Mounted Stop Lamp (HMSL):** The high mounted stop lamp integrated in the rear spoiler, let other vehicles vividly see you stopping on the road.



**Steering Switches:** Fingertip control of the sound system means you will never be distracted from the road ahead.



**6 Speakers:** High-quality high-range speakers are strategically positioned for clarity and balance with the other speakers.



**Aero Blade Wipers:** Aerodynamic wiper blades maintain contact with the windshield, even at high speeds.



**Skid Plate:** An attractive, aerodynamically contoured skid plate below the rear bumper helps protect the body and fuel tank from scrapes.



**Bridge-type Roof Rack:** Stores bikes, luggage or bulky sporting goods securely on the roof to preserve interior space and protect the upholstery from soil and moisture.



**Wheels:** 16-Inch Alloy Wheel

# Service there where you are



## First Two Free Services

First two services of your Kia vehicle are free of charge.

## Spare Parts Availability

Spare parts for your Kia vehicle are available through reputable dealerships.

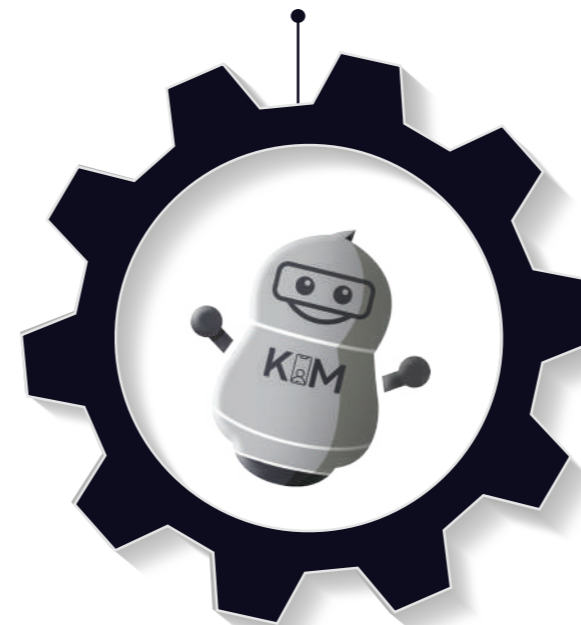


## Warranty

All Kia vehicles come with four years or 100,000 km warranty, whichever comes first.

## Kia Instant Messenger

KIM provides enhanced access to the entire local portfolio.



## Dealership Network

A strong growing foot print of state-of-the-art dealerships in 15 cities, keep you covered wherever you are.

## Kia Roadside Assistance

Kia Roadside Assistance, with its highly trained and technically equipped staff, is a speedy support service for Kia customers who experience a car breakdown.



# | Specification Sheet

FEATURES	EX	EX+
DIMENSIONS		
Length (mm)	4,140	
Width (mm)	1,760	
Height (mm)	1,500	
Wheel Base (mm)	2,580	
Minimum Ground Clearance (mm)	165	
Fuel Tank (Liters)	45	
Wheel Tread Front (mm)	1,537	
Wheel Tread Back (mm)	1,544	
PERFORMANCE		
Engine Type	1.4 L MPI	
Displacement (cc)	1,368	
Drivetrain	Front Wheel Drive	
Maximum Output (Ps/rpm)	100 / 6,000	
Maximum Torque (Nm)	133	
Transmission	6 Speed Automatic Transmission	
Fuel Supply System	Multi Point Injection	
Bore x Stroke (mm)	72x 84	
Compression Ratio	10.5	
Front Suspension	McPherson Strut	
Rear Suspension	Multi-link	
Brake (Front)	15" Disc	
Brake (Rear)	14" Disc	
Tyre Size	185/65R15	195/55R16
Wheel Type	15 Inch Alloy Rims	16 Inch Alloy Rims
Spare Wheel	Steel	
SAFETY		
Airbags	6 (Driver + Passenger + Front Thorax & Pelvis + Curtain)	
Hill-Start Assist Control	o	
Vehicle Stability Management	o	
Anti-Lock Braking System	o	
ISO Fix Child Anchor	o	
Seat Belts	5	
EXTERIOR		
Sunroof	x	o
Roof Rack	x	o
Front Grille	Matte Black	Piano Black
Headlamps	Bi-Function Projection Halogen with Static Bending	LED
Position Lamps	LED	
Daytime Running Lamps	LED	
Side Repeater Lamp	Outside Mirror	
Rear Combination Lamps	Bulb	LED
Outside Mirror	Electrically Adjustable + Retractable + Heated	
Fog Lamps (Front + Rear)	Bulb	
Auto Light Control	o	

FEATURES	EX	EX+
High Mounted Stop Lamp	Bulb	
Antenna	o	
Outside Handles	Body Color	
Skid Plate	o	
Aero blade Wiper	o	
INTERIOR		
D-Cut Steering Wheel	x	o
Steering Wheel Material	Poly Urethane	Leather Wrapped with Color Stitching
Steering Column	Tilt and Telescopic	
Steering Switches	Audio, Call, Voice Recognition, MID	
TFT Cluster	3.5" Cluster Conventional TFT LCD + Rheostat	4.2" Cluster Conventional TFT LCD + Rheostat
Gear Shift Knob Material	Soft PVC	Leather Wrapped
Inside Rear View Mirror	Day and Night	Electro-Chromic Mirror
Multimedia System	8" Floating Infotainment with Android Auto and Apple Car Play with Bluetooth connectivity	
Power Windows	Power (Driver Auto Up/Down and Safety)	
Speakers	6	
USB Connectivity	o	
Air Conditioner	Automatic	
Interior	Black Single Tone	Grey Two Tone with Yellow Package
Seat Material	High Grade Fabric	Fabric and Artificial leather
60:40 Split	o	
Overhead Console Lamp	Bulb	
Room Lamp	Bulb	
Luggage lamp	Bulb	
Cup Holders	6	
Luggage Board	o	
Console Box	x	o
Metal pedal	x	o
Vanity Mirror	Illuminated ( D+P)	
Inside Handle	Satin Chrome	
Sunglass Case	o	
Seat Back Pocket	o	
Height Adjuster	Driver	
COMFORT AND CONVENIENCE		
Door Lock System	Keyless Entry	Smart Key with Push Start
Park Assist Sensors	x	Forward and Reverse
Cruise Control	x	o
Manual Speed Limit Assist	x	o
Rear View Camera	x	o
Window Defogger	Automatic	
Parking Brake	Manual	
Central Door Lock	o	
Immobilizer	Automatic	
Tire Pressure Monitoring System	o	

\*May vary according to region